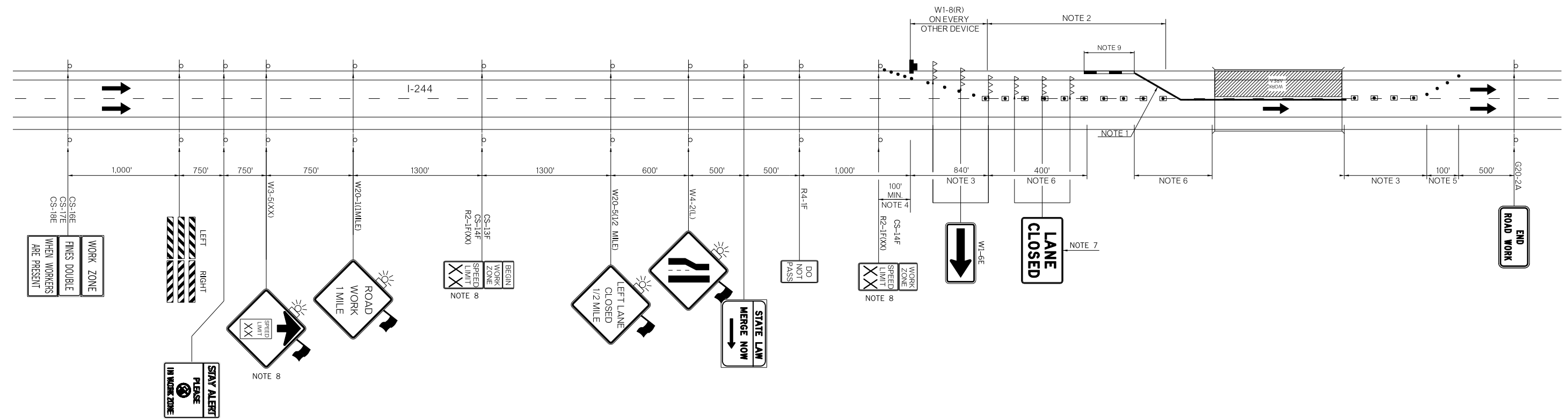


REVISIONS		
REV. NO.	DESCRIPTION	DATE

ALL MERGING AND EXIT RAMP ARE TO REMAIN OPEN AND ACCESSABLE AT ALL TIMES.

THIS TRAFFIC CONTROL DETAIL IS FOR EAST I-244 & WEST I-244 TO NORTH 75



NOTE 1

SPEED *	FLARE RATE (MINIMUM)
40 M.P.H.	9 TO 1
45 M.P.H.	10 TO 1
50 M.P.H.	11 TO 1
55 M.P.H.	12 TO 1
60 M.P.H.	13 TO 1
65 M.P.H.	14 TO 1
70 M.P.H.	15 TO 1
75 M.P.H.	16 TO 1

\* POSTED SPEED LIMIT PRIOR TO CONSTRUCTION

NOTE 2  
MAXIMUM SPACING BETWEEN CHANNELIZING DEVICES (FEET) SHALL BE TWICE THE POSTED SPEED LIMIT (M.P.H.) WITH THE FOLLOWING EXCEPTIONS. SPACING SHALL NOT EXCEED 50 FEET FOR CONES OR TUBE CHANNELIZERS. SPACING SHALL NOT EXCEED 75 FEET FOR CHANNELIZER CONES. SPACING SHALL NOT EXCEED 100 FEET FOR TYPE II BARRICADES, VERTICAL PANELS OR DRUMS.

NOTE 3  
MAXIMUM SPACING BETWEEN CHANNELIZING DEVICES (FEET) SHALL BE EQUAL TO THE POSTED SPEED LIMIT (M.P.H.) WITH THE FOLLOWING EXCEPTIONS. SPACING SHALL NOT EXCEED 25 FEET FOR CONES OR TUBE CHANNELIZERS. SPACING SHALL NOT EXCEED 50 FEET FOR TYPE II BARRICADES, VERTICAL PANELS OR DRUMS.

NOTE 4  
A MINIMUM OF FIVE (5) CHANNELIZING DEVICES SHALL BE PLACED THROUGH THIS TAPER.

NOTE 5  
DOWNSTREAM TAPERS SHALL CONTAIN A MINIMUM OF FOUR (4) CHANNELIZING DEVICES.

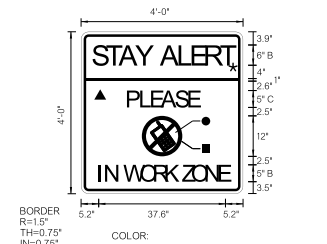
NOTE 6  
A LONGITUDINAL BUFFER AREA, TO ALLOW WORKERS TIME TO EVACUATE THE WORK AREA, SHOULD BE PROVIDED. FOR GUIDELINES ON SETTING THE LENGTH OF THIS BUFFER, SEE STANDARD DRAWING TCS2-1-(LATEST REVISION). ACTUAL LENGTH SHALL BE DETERMINED BY FIELD CONDITIONS AND THE JUDGEMENT OF THE ENGINEER.

NOTE 7  
TYPE III BARRICADES WITH SIGNS READING "LANE CLOSED" (R11-2) SHALL BE PLACED EVERY 2,000 FEET THROUGH ACTIVITY AREA. THESE TYPE III BARRICADES AND SIGNS MAY BE OMITTED ON MOVING OPERATIONS AND SHORT DURATION PROJECTS.

NOTE 8  
CONSTRUCTION SPEED LIMIT TO BE DETERMINED BY THE DIVISION ENGINEER.

NOTE 9  
IF CLEAR ZONE CAN BE MET BY FLARING MEDIAN BARRIER, THE CONST. ZONE IMPACT ATTENUATORS MAY BE OMITTED. SEE FLAIR RATE TABLE.

FOR ADDITIONAL INFORMATION ABOUT TAPER LENGTHS AND SPACING OF CHANNELIZING DEVICES, SEE STANDARD DRAWING TCS2-1-(LATEST REVISION).

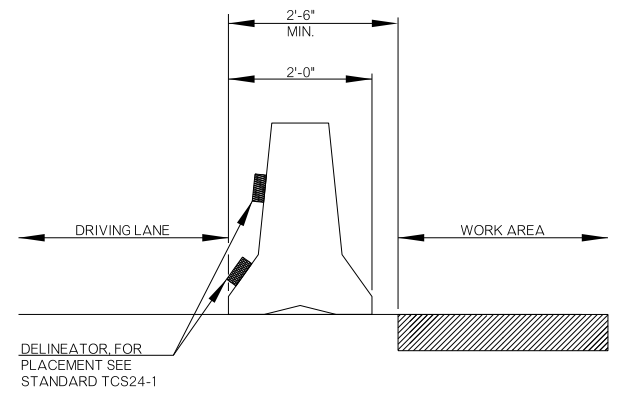


BORDER  
R=15'  
TH=0.75"  
IN=0.75"

COLOR:  
LEGEND, SYMBOL AND BORDER  
BLACK (NON-REFLECTORIZED)  
BACKGROUND:  
▲ FLUORESCENT ORANGE (REFLECTORIZED)  
★ FLUORESCENT YELLOW (REFLECTORIZED)  
■ WHITE (REFLECTORIZED)  
● RED (TRANSPARENT)

KEY:

	SIGN
	DRUM
	CHANNELIZING CONE
	WORK AREA
	TYPE III BARRICADE
	ARROW DISPLAY
	CONST. ZONE IMPACT ATTENUATOR
	PORTABLE LONGITUDINAL BARRIER



NOT TO SCALE

TRAFFIC CONTROL DETAIL  
(UNDER BRIDGES E & F)

Drawn	JF	6/16
Design	JF	6/16
Checked	SEB	6/16

TRAFFIC ENGINEERING  
JAMI SHORT

STATE OF OKLAHOMA	DIVISION 8	DEPARTMENT OF TRANSPORTATION	JOB/PIECE NO. 30318(06)	SHEET NO. T003
-------------------	------------	------------------------------	-------------------------	----------------